



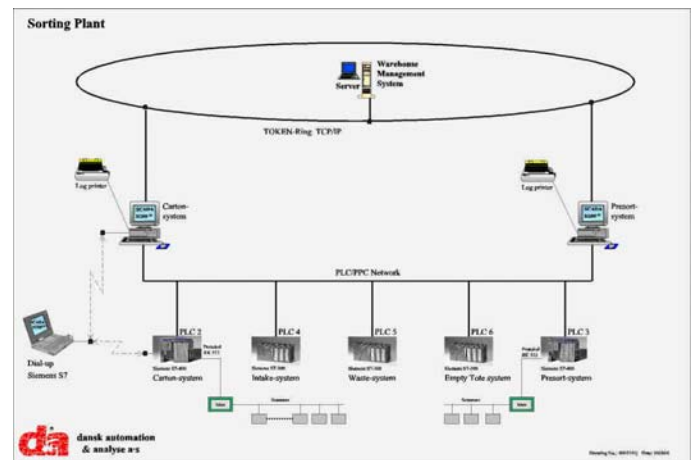
# ASDA Stores Ltd.

## Warehouse

United Kingdom

### Plant description

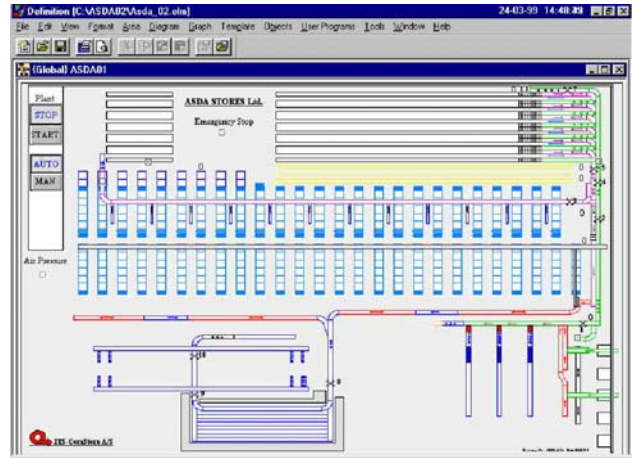
ASDA Stores is the main stock for all ASDA super markets in the UK. From here all clothing items are distributed to the department stores. All items are marked with a bar code, which is read on arrival at the warehouse, before it is brought into the 40,000 m<sup>2</sup> warehouse. The individual items are also ordered by use of bar codes and are automatically sorted to the individual customer.



### IGSS system

The SCADA system consists of 2 IGSS systems. Each system has 600 objects and is a multi-user system with 2 operator stations for operation and supervision of the warehouse. Regulation is undertaken by 6 Siemens S7-400 PLC systems and approximately 50 bar code scanners.

# CUSTOMER CASE



## Owner

ASDA Stores Ltd. – Brackmills UK.

## System Integrator

Dansk Automation & Analyse A/S