

CUSTOMER CASE



Bording Mink Feed a.m.b.a.

Animal Feed

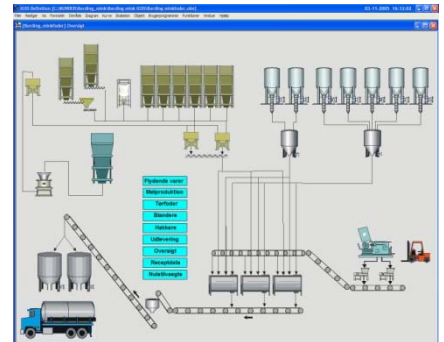
Denmark

Facility Description

Bording Mink Feed a.m.b.a. produces fresh feed daily for mink farmers who own the production machinery. The annual quantity produced varies widely. In periods with many puppies/young animals, more than 100,000 kg is produced. The facility consists of a dry warehouse with production of cereal products, and a wet warehouse with fresh and frozen fish. The mixing process is controlled by the connected IGSS system.

IGSS system

The SCADA system consists of a 2000 object multi-user system with two operator seats. The IGSS system is used for prescription controlled operation and supervision of the production plant. The operation is performed by use of a Siemens S7-400 PLC system with decentralized I/O in sub-boards.



Owner

Bording Mink Feed a.m.b.a

System Integrator

Dansk Automation & Analyse A/S

