



Carlsberg Breweries

Beer Production

Denmark

Plant Description

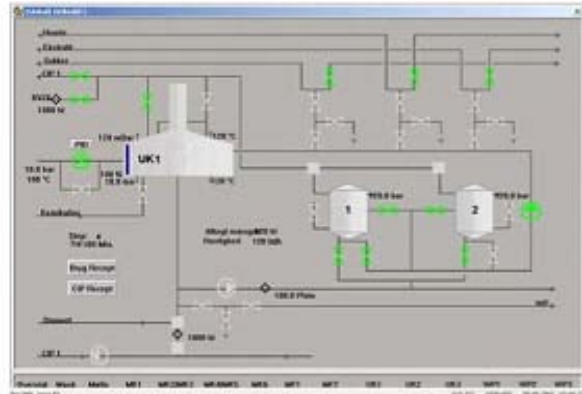
The Carlsberg brewery located in the quarter of Copenhagen called Valby was originally built at the turn of the last century. The brewery has an annual production of 2 million hectoliters, which is chiefly distributed to the market of Eastern Denmark.

From raw materials delivery at the malt and hops silos through mixing ingredients in cauldrons of boiling water, then the filtering process and finally the transfer to fermentation tanks, IGSS is the SCADA software that monitors and controls the entire process.

Two other IGSS systems are also installed at the brewery – one for monitoring the plant's electricity production and one for monitoring boilers.



The brewing cauldrons from the 1930s still in use.



Mimic of a brewing cauldron

Owner

Carlsberg A/S owns Carlsberg Breweries A/S, which is the 5th largest brewery group in the world. Carlsberg Breweries produces a variety of beer and soft drink brands for local, regional and global markets.

CUSTOMER CASE

IGSS Application

The IGSS system consists of 11 operator stations spread throughout the plant. A hot standby server solution has also been implemented in case of primary server failure. There are approximately 4,500 objects in this brewery configuration, and in the future the plant will be placing more plant equipment in the SCADA system.

System Integrator

The system integrator is Tångberg Pro-Consult ApS