

CUSTOMER CASE



Egersund Bridge in Gråsten

Bridge

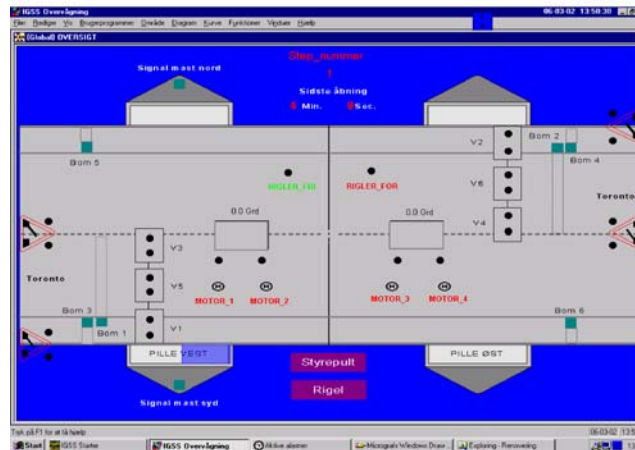
Denmark

Plant Description

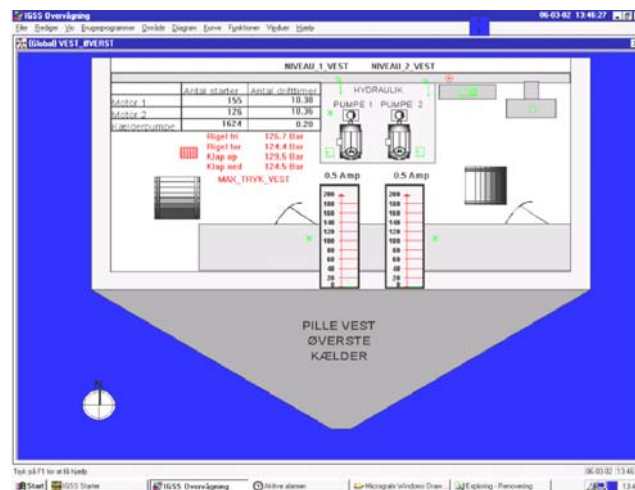
The bridge over Egersund in Southern Jutland is a modern road bridge with two lanes in each direction. The bridge leads traffic on Highway 8 across the narrow inlet to Egersund bay. The bridge reflects a time when functionality and efficiency were the main focus in construction. The Egersund bridge was completed in 1968 and modernized and equipped with a modern management system in 1999.



Egersund Bridge is equipped with two bascules, each weighing 200 tons. At each bascule there is a counterweight of 200 tons, resulting in 400 tons on each side of the bridge. The bascules open to allow passage to ships and sailboats. The opening time of the bridge can be seen on two large clocks on the bridge itself and it takes four minutes to open and close the bridge.



Egersund Bridge opens and closes flaps and sliding bolts by means of hydraulic cylinders. There are two engines at each hydraulic station. If one engine fails, the other engine can still lift the flaps, at half speed. In case of total damage of a hydraulic station, the flaps can be moved manually by using a hand pump or a portable mini-hydraulic station with an electric motor.



Owner

South Jutland County

IGSS

The SCADA system consists of a 400 object single-user system with one operator station.

System Integrator

Høier & Vendelbo A/S