



Grand Princess

Cruise Liner

United States

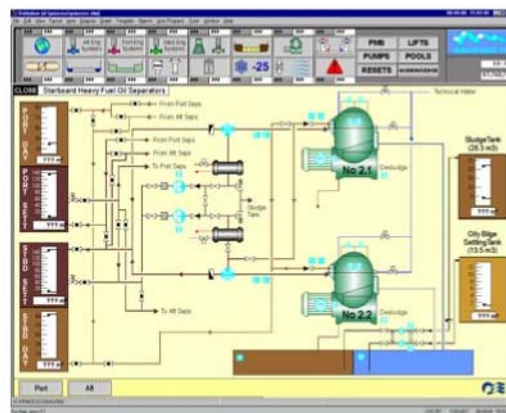
Grand Princess Statistics

One of the largest luxury liners sailing under a cruise operator in the U.S., the Grand Princess was built in the Italian shipyards of Fincantieri Monfalcone and the ship automation system was designed and installed by Siemens AB of Germany. At the time of its commissioning in 1998, Grand Princess was the largest passenger ship ever built. The ship alternates its cruise schedule between the Caribbean and the Mediterranean.

- 109,000 gross tons
- 284.9 meters length overall
- 7.9 meters draft
- 2,594 passengers
- 1,297 staterooms (710 with balconies)
- 12 passenger decks
- 1 casino
- 14 elevators
- 4 swimming pools
- 1,150 crew members
- Cruising speed of 24 knots



The *Grand Princess* under way.



Mimic part of the engine room.

CUSTOMER CASE

Owner

The Grand Princess is owned and operated by P&O Cruises, which is one of the largest cruise operators in the world. P&O Cruises carried over 1 million passengers in 2001 to destinations including Alaska, Europe, the Panama Canal, the Caribbean, South America, the Pacific, the Orient and India.

IGSS Application

The IGSS ship automation system includes 17 separate applications and is based on event oriented communication. There are more than 600 diagrams in the configuration, more than 15,000 objects and response time in the system is less than 2 seconds. The IGSS system runs on one main server and a second, dualized back-up server and is monitored and controlled by several operator stations.

System Integrator

Siemens AG