

## CUSTOMER CASE

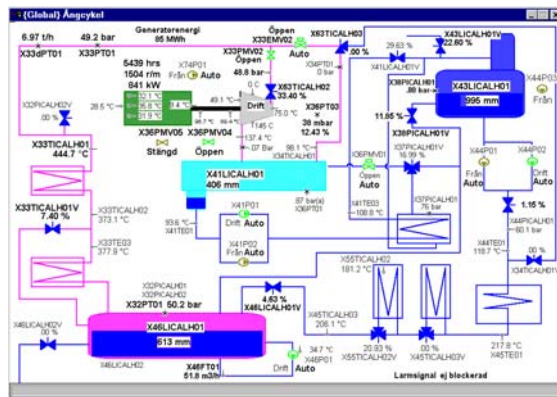


# Vattenfall AB Värme Norden Myresjö CHP Plant

Sweden

## Plant Description

Myresjö Såg AB consists of a wood-burning boiler and turbine facility for the production of power and district heating.



The combined effect is 10 MW and the district heating production is 40 GWh/year. The power production is 6 GWh/year. 80,000 m<sup>3</sup> of waste and surplus wood a year is burned as fuel. The plant delivers heating to the saw mill, the production facility, and the house factory.

## Owner

Vattenfall AB Värme Norden.

## IGSS

The SCADA system consists of a 1,000 object multi-user system with 2 operator stations.

## System Integrator

IP Industri & Projektconsult AB, <http://www.ip-consult.se/>