

CUSTOMER CASE



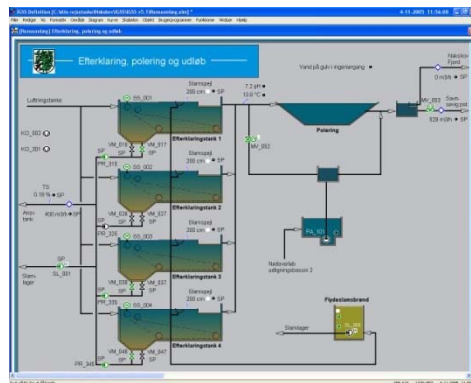
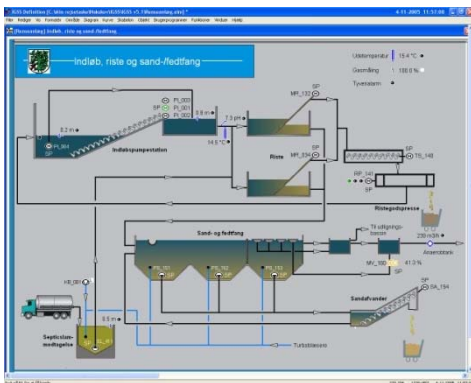
Nakskov CWTP

Wastewater Treatment

Denmark

Plant Description

All sanitary wastewater in the municipality of Nakskov is led to a modern treatment plant where it is mechanically, biologically, and chemically purified to adhere to environmental legislation and the county's discharge permits. The sludge is cleansed in a sludge mineralization facility where it is cleansed and dried for a period of 10-15 years. The surface water is led to the treatment plant and either into the Nakskov fjord or into the Innerfjord via discharging to various water streams.



IGSS system

The SCADA system consists of a 5,000 object multi-user system with 3 simultaneous operator stations. The IGSS system is used for monitoring and controlling the facility, and for data collection for graphs and reports. 5 Siemens S7 PLC systems in the S7-400 and S7-300 series and sub panels expanded with distributed I/O on Profibus enable the control. PLCs communicate with each other and the IGSS system via Ethernet.

Owner

Municipality of Nakskov

System Integrator

Dansk Automation & Analyse A/S

