



# Anderslöv, Ruukki Sweden AB

## Construction Industry

Sweden

### IGSS Application

IGSS controls and supervises the entire plant. An IGSS system with 2,000 objects has been installed, servicing six Omron PLCs. Two operator stations are used to monitor and control the plant.

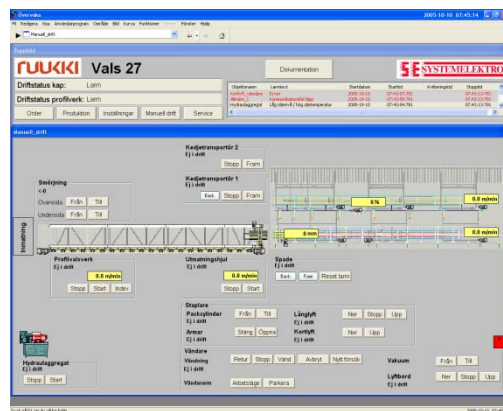
### Plant Description

The plant at Anderslöv is a profile-rolling mill that produces profile-rolled construction sheets from flat sheets. Operation of the machine is done from the operator's computer. Production orders with order number, length, number, etc. are entered via IGSS to a database on the operator's computer. The production data is then sent via IGSS to the PLC.



### IGSS

The system has 1 IGSS single-user installation, which is configured with 200 objects. The IGSS system is used for data collection and traditional service with graph displays. The machine is controlled by a Telemecanique TSX Premium PLC-system. The PLC-system communicates via Modbus TCP with an IGSS system installed on the operator's computer.



## CUSTOMER CASE

Gasell Profil AB is a subsidiary of the steel group Rautaruuki Oy in Finland. The company's mission is *to develop, manufacture and market value-added sheet products with superior quality*. Gasell Profil AB is a market leader in steel technology, with customers mainly in the construction and engineering industries. The company invests continuously to develop and launch new products and also maintains a focus on new markets which is also important in order to grow and develop. Ruukki covers most of the Nordic countries and also has a great success in Poland and England. Efforts are also made in the Baltic countries and Russia where opportunities are good.

### **Owner**

Ruukki

### **System integrator**

Systemelektro AB