



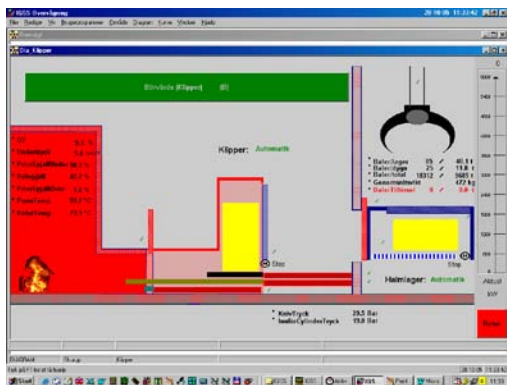
Skurup District Heating

Biomass fuel

Sweden

Plant Description

In April, 2000 a district heating plant was built in Skurup, Sweden using a Danish manufactured straw burning furnace with a capacity of 4.5 MW. The plant incinerates 6,000 to 7,000 tons of straw yearly. The choice of a straw burning furnace was made due to the desire to reduce oil consumption in an environmentally responsible manner. The annual production of the plant can achieve a heating capacity of 20 GWh. The Danish firm Orbital A/S designed the IGSS application as an integrated part of the plant in co-operation with the furnace manufacturer.



IGSS system

The district heating plant is equipped with an IGSS multi-user system consisting of an operator station and 600 objects. It's used for data collection, trending and traditional operation and monitoring. Communication between the plant and the SCADA system takes place via MPI with a SIEMENS S7 315-2 DP PLC, which runs on Profibus to all de-central I/O.

Owner: Svenska BrikettEnergi AB.

Systemintegrator: Orbital A/S, Skjern, Danmark

