

CUSTOMER CASE



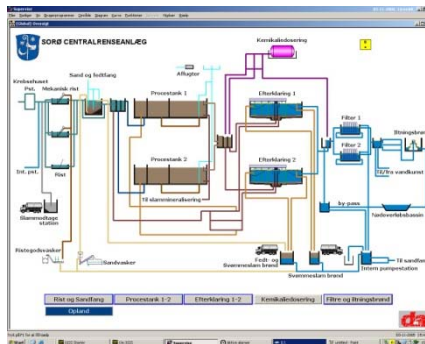
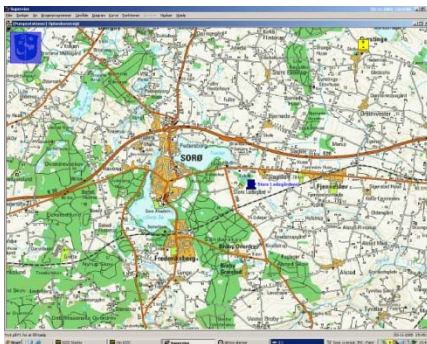
Sorø Central Wastewater Treatment

Wastewater

Denmark

Plant Description

The municipality of Sorø has built a completely new treatment plant, dimensioned to address an organic load of 23,000 PE and enabled for a potential of 35,000 PE. The plant is built as a two-string facility without a decomposition tank. As well as monitoring and controlling the treatment plant, the IGSS system is also connected to about 40 pump stations.



IGSS system

The SCADA system is a 10,000 object multi-user system with 5 operator stations. The IGSS system is used for surveillance and control of the plant, in addition to data collection for graphs and reports. Control and monitoring is enabled through an Allen Bradley PLC system, which communicates with distributed I/O and the IGSS system via Ethernet.

Owner

Municipality of Sorø

System Integrator

Dansk Automation & Analyse A/S

