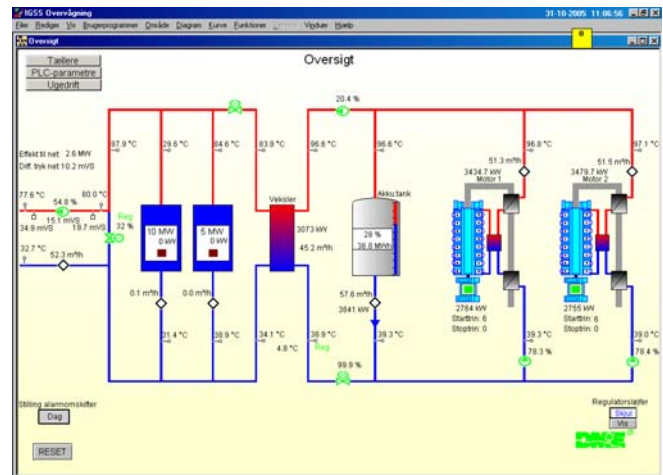
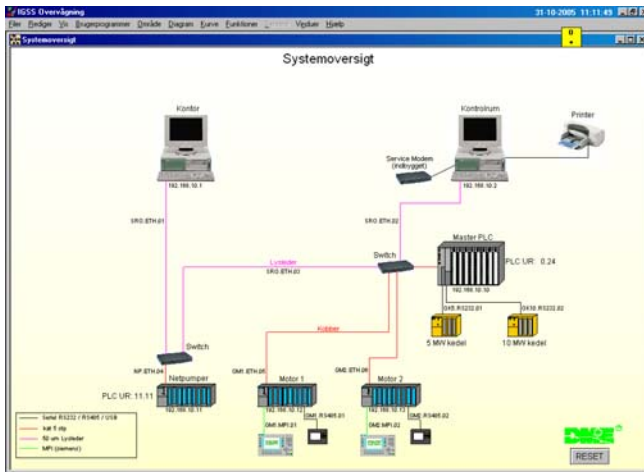




# CUSTOMER CASE

## IGSS system

The heat and power plant has two IGSS single-user systems, each with 2,000 objects. The plant is controlled through a Siemens S7 400 Master PLC and three Siemens S7 300 over Ethernet. It is possible to remotely connect to the SCADA via modem.



## Owner

Vindrup Heat and Power Plant

## System Integrator

Dansk Miljø- & Energistyring A/S, [www.dme-as.dk/](http://www.dme-as.dk/)